

Topographic Map 31 B/12  
Navigation Chart 1435  
Waterproof Chart#78  
Reference Map 10



*Fulford Place, the grand Edwardian Mansion of G.T. Fulford, is just one of many historic buildings in Brockville. Take time off the water to explore one of Ontario's oldest cities.*



# ROUTE

## Brock Isles



At the eastern end of the Thousand Islands and the edge of the Frontenac Axis, lie the 70 islands and 60 shoals that comprise the Brockville Narrows group. As the name implies, the river narrows considerably here to a width of only 1.4 km. The many small islands offer a scenic and relaxing route for daytrippers, just offshore from historic Brockville. Island day-use and camping facilities on Stovin Island and several Brockville municipal park islands make this route an ideal paddle for those seeking a relaxing day of paddling or a base to begin an extended trip.

### DEPARTURE POINT

St. Lawrence Park, located along King Street on the western edge of the city, offers boat launching, parking and camping facilities. The park operates seasonally, and a small fee applies for parking.

Centrally located boat launching sites (with docks and ramp) at the foot of Home Street and Henry Street, provide easy access to the river with ample free parking, a washroom, changehouse, and public telephone nearby.

### TRIP LENGTH

A full day of paddling can be filled in this small section of the Thousand Islands. Numerous island camping facilities in the Brock Isles, permit overnight tripping in this narrow section of the river.

### DISTANCE

Two kilometres separate Mollys Gut and Stovin Island, another 2.5 km will see you to shore at St. Lawrence Park



## **HISTORIC CITY OF THE 1000 ISLANDS**

As you paddle the narrow waters off Brockville, you may find your attention drawn from water to land by the scenic beauty of this small city steeped in history. Turn your paddling adventure into a learning adventure by admiring the fascinating architecture of the homes along the river's bank. On land, one doesn't have to travel far from the water to take a step back in time: visit Canada's first railway tunnel that used to deliver passengers and freight to the St. Lawrence River at Blockhouse Island; explore Fulford Place; take a summer evening 'ghost walk' stroll through town or stop in at the Brockville Museum to discover more about this river community's remarkable past. Visit the Brockville Tourism Information Centre on Blockhouse Island or contact them in advance 1-888-251-7676 [www.brockville.com](http://www.brockville.com)

## **POINTS OF INTEREST**

### **St. Lawrence Park**

Shaded by majestic oaks, graced with a sandy beach, and serviced with campsites, washrooms and a canteen, St. Lawrence Park is an ideal launch site for paddlers embarking on day-trips in the Brock Isles.

### **Henry Park**

This lovely day-use park features several shaded picnic areas, with a change house, washroom, and pay telephone.

### **Skeleton Island**

Skeleton Island is a close destination for paddlers to explore. It lies just east of the Park access point, behind Victoria and Mile Islands. A dock at the west end of the island is usually empty, but provides access to the island trails and is a nice place to quickly cool off on a hot afternoon.

### **Stovin Island**

Stovin Island is the most easterly gateway to St. Lawrence Islands National Park. Several large docks on the south face of the island and two quiet campsites await paddlers who may be arriving from upriver before fully exploring the Brock Isles. The natural integrity of the island has been maintained by the careful management of the national park, and despite its popularity Stovin remains home to a rich diversity of forest species. Hike past sprawling juniper, over the granite ridges of white pine, and atop rocky cliffs where only the sturdiest trees dare send roots. Like many of the Thousand Islands, Stovin shows signs of the glacial scouring that was instrumental in sculpting much of the landscape.



## Black Charlie, McCoy, Cockburn, De Rottenburgh, and Sparrow Islands

Docks, campsites and washrooms are located on all 5 of these destination islands. All are suitable for paddlers to enjoy a picnic, stroll the trails or spend an evening.



Day use of facilities is free of charge, a fee applies to overnight camping facilities, which operate from May 15 to September 15. Reservations for these sites can be arranged in advance with the City of Brockville, Community Services Department. Call (613) 342-8772 and ask for Parks. Other municipal islands can be used to land (at docks provided or on small rock beaches), and stroll or find shelter to pull out of a storm.

## Mollys Gut

As you travel the mainland shoreline, paddle in to Mollys Gut, a sheltered marsh shoreline between Hillcrest Point and De Watteville Island. This bay is a favorite spot to bird-watch, and a good place to spy a great blue heron lurking in the reeds. To stretch your legs, stroll Mollys Gut Island.

## EXTENSION

Most paddlers on an extended trip on the Thousand Islands Water Trail, choose to paddle downstream. For the more adventurous, however, route #9 can be the starting point of your adventure. Through paddlers heading upriver, with plans to camp on Grenadier Island, should depart early in the day from one of the islands in the western end of the Brock Isles, and allow a full day for river travel. Remember that you will be paddling against the current.



## HAZARDS

### Shipping Channel

The International Shipping Channel poses a real hazard along this entire route due the narrowness of the river. The Shipping Lane lies between the Brock Isles and the Canadian mainland, directly parallel to the paddling route. Paddlers should be sure that no vessels are approaching and exercise caution when crossing this channel. For peace of mind (or to know what's coming!), check the local newspaper to determine when vessels will be in the channel.

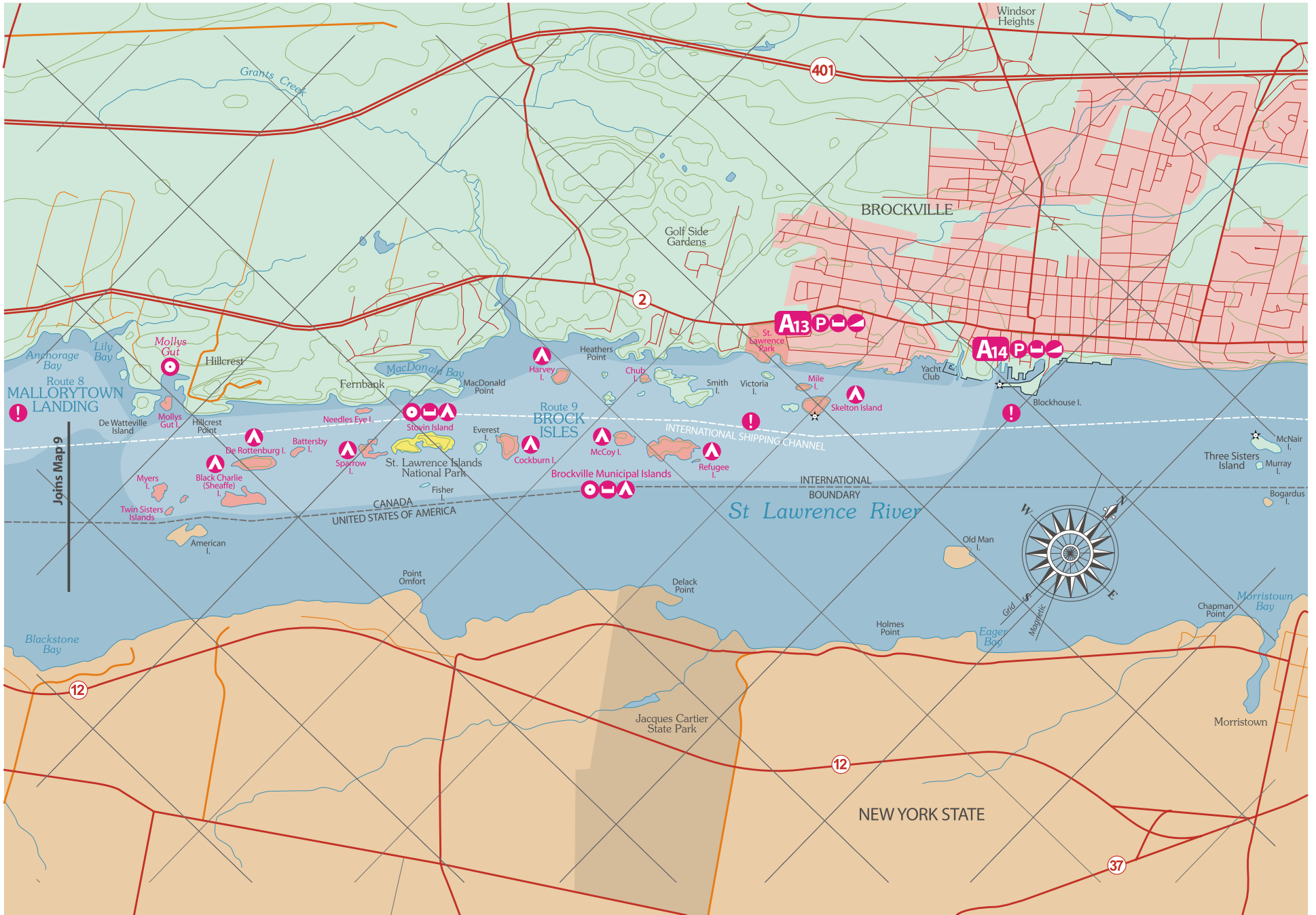


### Recreational Boats

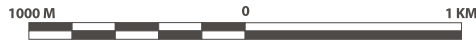
Brockville harbour is a busy place for pleasure craft and sailboats. Be aware of other craft, especially when launching and beaching.

### Open Waters

Above Myers Island the route is fully exposed to prevailing southwesterly winds and can be rough paddling in anything but light conditions. Stick close to shore from De Watteville Island, past Lily Bay, Butternut Bay and on to Jones Creek east of Whitney Point.



Route 8:  
MALLORYTOWN LANDING



MAP 10

Route 9:  
BROCK ISLES